

# AL-1·1T

## Features

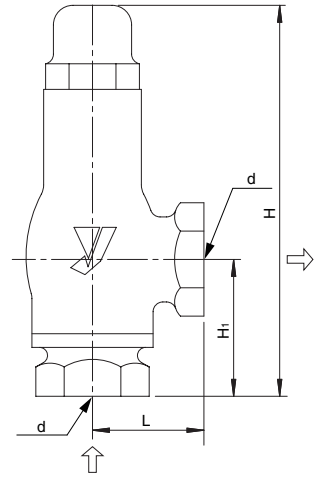
1. Reliable discharge operation minimises downtime and maintenance cost.
2. Simple construction enables easy maintenance.
3. Fluoroplastic disc enables tight shutoff for gas and liquid service (AL-1T).

## Specifications

Model	AL-1		AL-1T	
Structure	Open type		Closed type	
Application	Steam		Air, Oil, Water, Non-dangerous fluids	
Working pressure	0.05-1.0 MPa			
Maximum temperature	220°C		150°C	
Material	Valve case		Cast iron	
	Valve, valve seat		PTFE·Cast bronze	
Connection	JIS Rc screwed			



AL-1



## Dimensions and Weights

Nominal size	Dimension (mm)					Flow area $\pi D \ell$ (mm <sup>2</sup> )	Weight (kg)
	d	L	H <sub>1</sub>	H	Seat diameter		
15A	Rc 1/2	43	55 (56)	170 (172)	23	41.6	1.3
20A	Rc 3/4	57	70 (71)	200 (202)	25 (29)	49.1 ( 66.1)	2.2
25A	Rc 1	57	70 (71)	200 (202)	25 (29)	49.1 ( 66.1)	2.2
32A	Rc 1-1/4	70	82 (83)	266 (268)	37	107.6	4.4
40A	Rc 1-1/2	75	90 (91)	272 (274)	38 (37)	113.5 (107.6)	5.1
50A	Rc 2	82	98 (99)	284 (286)	50	196.4	7.1

• The above values in parentheses are the dimensions of the AL-1T.

## Certified Capacity Table

### ●AL-1 for steam (saturation temperature) <Pressure vessel structure standard>

(kg/h)

Pressure MPa \ Nominal size	0.05	0.1	0.2	0.3	0.4	0.5	0.6	0.7	0.8	0.9	1.0
15A	32	42	59	78	99	118	138	157	176	195	214
20A	38	50	69	93	117	140	162	185	208	230	253
25A	38	50	69	93	117	140	162	185	208	230	253
32A	84	109	152	204	256	306	357	406	455	505	554
40A	89	115	161	215	270	323	376	429	480	532	585
50A	154	200	278	372	468	560	651	742	832	922	1012

### ●AL-1T for air (20°C) <Pressure vessel structure standard>

(kg/h)

Pressure MPa \ Nominal size	0.05	0.1	0.2	0.3	0.4	0.5	0.6	0.7	0.8	0.9	1.0
15A	46	65	99	134	168	202	237	271	306	340	374
20A	74	104	158	213	267	322	377	431	486	540	595
25A	74	104	158	213	267	322	377	431	486	540	595
32A	121	169	258	347	436	525	613	702	791	880	969
40A	121	169	258	347	436	525	613	702	791	880	969
50A	221	309	471	634	796	958	1122	1282	1444	1607	1769

### ●AL-1T for water (accumulation: 25%) <Yoshitake standard>

(m<sup>3</sup>/h)

Pressure MPa \ Nominal size	0.05	0.1	0.2	0.3	0.4	0.5	0.6	0.7	0.8	0.9	1.0
15A	0.5	0.7	1.0	1.2	1.4	1.6	1.8	1.9	2.0	2.2	2.3
20A	0.8	1.1	1.6	2.0	2.3	2.6	2.8	3.0	3.3	3.5	3.6
25A	0.8	1.1	1.6	2.0	2.3	2.6	2.8	3.0	3.3	3.5	3.6
32A	1.3	1.9	2.6	3.2	3.8	4.2	4.6	5.0	5.3	5.7	6.0
40A	1.3	1.9	2.6	3.2	3.8	4.2	4.6	5.0	5.3	5.7	6.0
50A	2.4	3.4	4.9	6.0	6.9	7.7	8.5	9.1	9.8	10.4	10.9

• Please contact us for the calculation procedure for nominal size selection.